

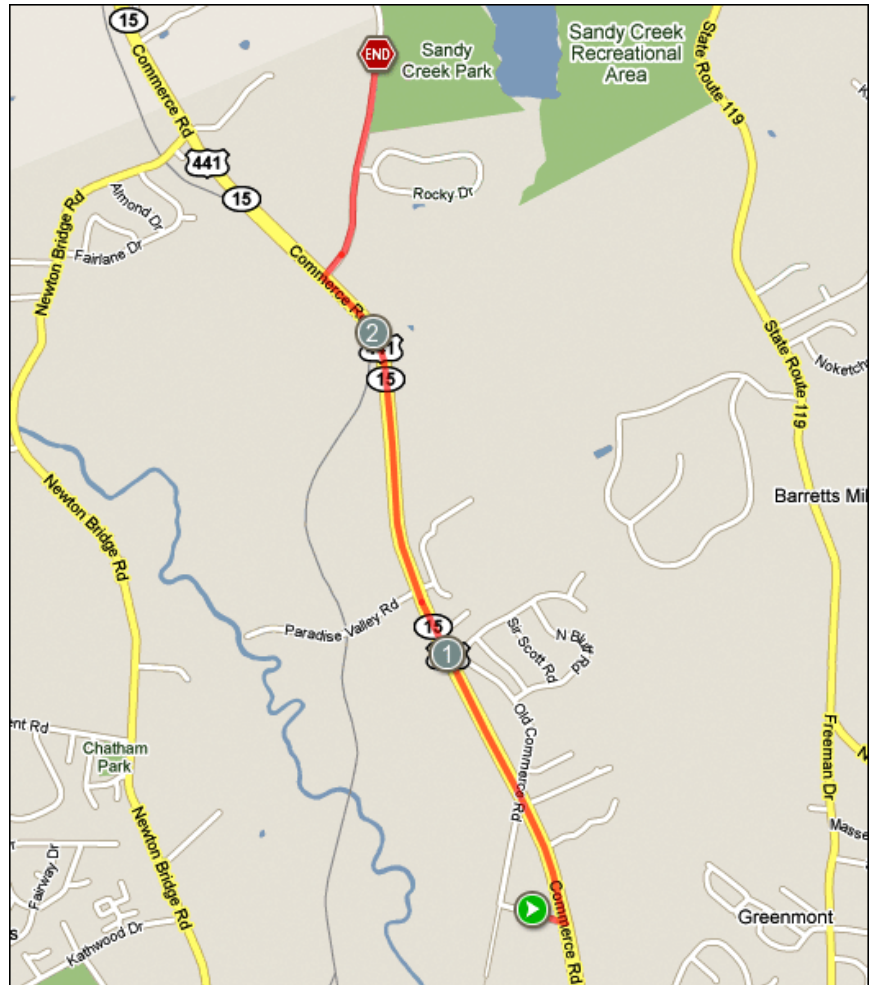
LEG 2 - Sandy Creek Park

6.5 MILES | EASY

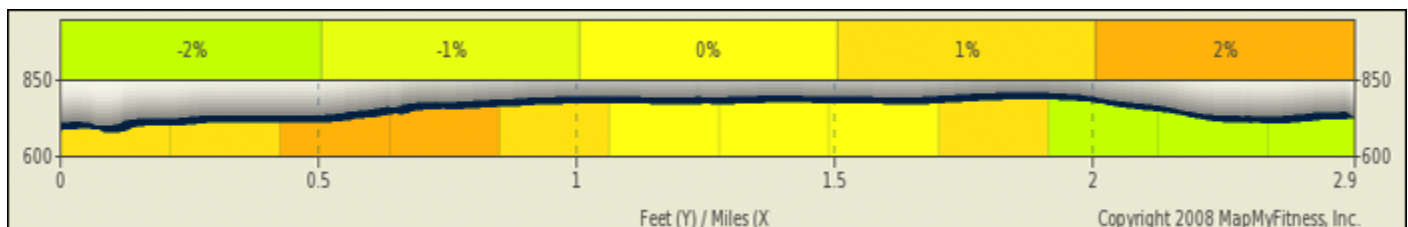


RUNNER DIRECTIONS

1. Leave Sandy Creek Nature Center taking a left, follow paved secondary road for **.5 miles**
2. Left on Hwy 441/Commerce Road to **2.1 miles**
3. Pass Sandy Creek signs on the right
4. Cross 441 (Note: busy road; use caution)
5. Take a right on Bob Holman Road
6. Pass the Baptist Church on the right
7. Continue **to 2.9 miles**
8. Sandy Creek Park will be on the right
9. Run inside Sandy Creek Park for a few miles



ELEVATION: min: 627ft | max: 755ft | ascent: 118ft | descent: -89ft



LEG 2 - Sandy Creek Park

6.5 MILES | EASY



VAN DIRECTIONS

1. Leave Sandy Creek Nature Center taking a left, follow paved secondary road for **.5 miles**
2. Left on Hwy 441/Commerce Road to **2.1 miles**
3. Pass Sandy Creek signs on the right
4. Cross 441 (Note: busy road; use caution)
5. Take a right on Bob Holman Road
6. Pass the Baptist Church on the right
7. Continue **to 2.9 miles**
8. Sandy Creek Park will be on the right
9. Run inside Sandy Creek Park for a few miles